

PARKMORE BUS PRIORITY SCHEME

NEWSLETTER - ISSUE NO. 6

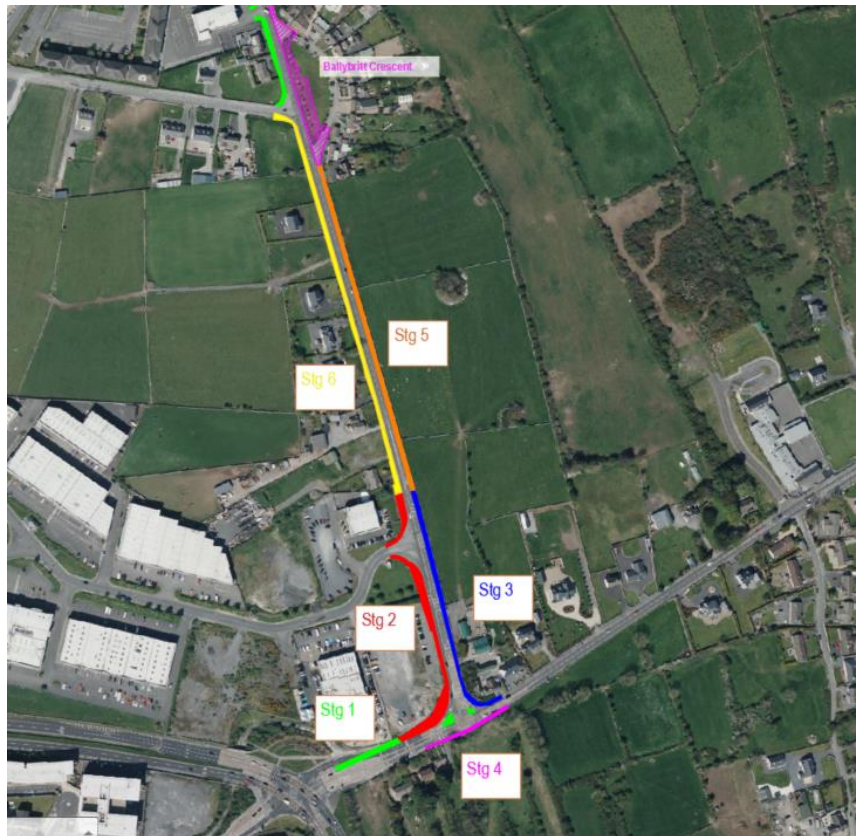
June 13 2024

WELCOME TO THE 6th ISSUE OF THE PARKMORE BUS PRIORITY PRIORITY SCHEME NEWSLETTER

Construction of the Parkmore Bus Priority scheme has been ongoing since February 19 with good progress being made on works at Monivea Junction, Parkmore Road and Ballybrit Crescent. The following gives an outline of works planned for the next 4 weeks:

Day shift works:

- Concrete footpath works are now complete on the East Footpath from Monivea Junction to Ballybrit Crescent (Stages 3 and 5). Works over the next period will be focused mainly on the Western Footpath (Stages 2 and 6) and Monivea Junction (Stages 1 and 4). JCEL will liaise with property owners in advance to stage footpath works across entrances in Stage 4 and Stage 6 Areas.
- Temporary traffic management measures, including off-peak lane closures and temporary pedestrian and cycleway diversions, will also be in place around the works areas as is necessary. Please refer to sketch below showing the temporary pedestrian diversion route required to facilitate kerbing and footpath works in Stage 1 and Stage 2 Areas.

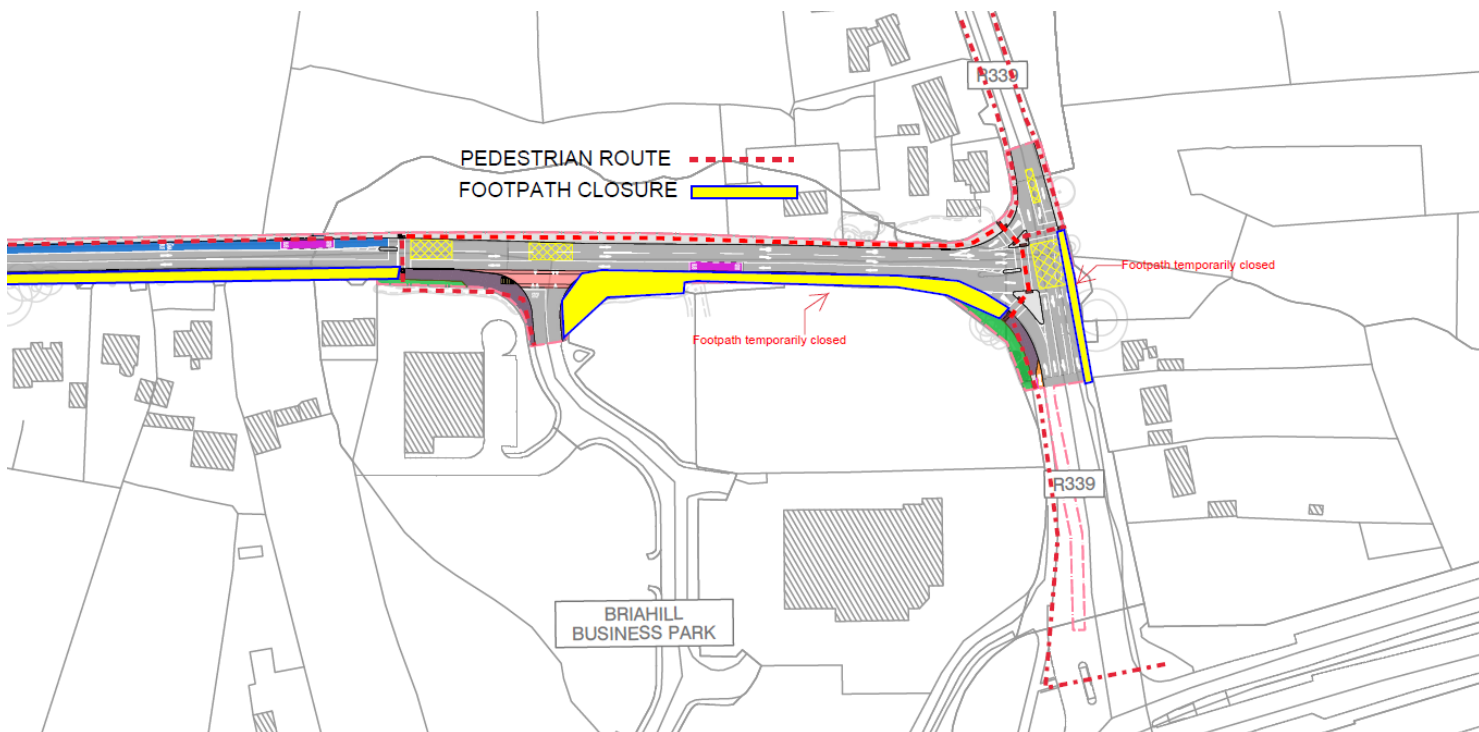


Night shift works:

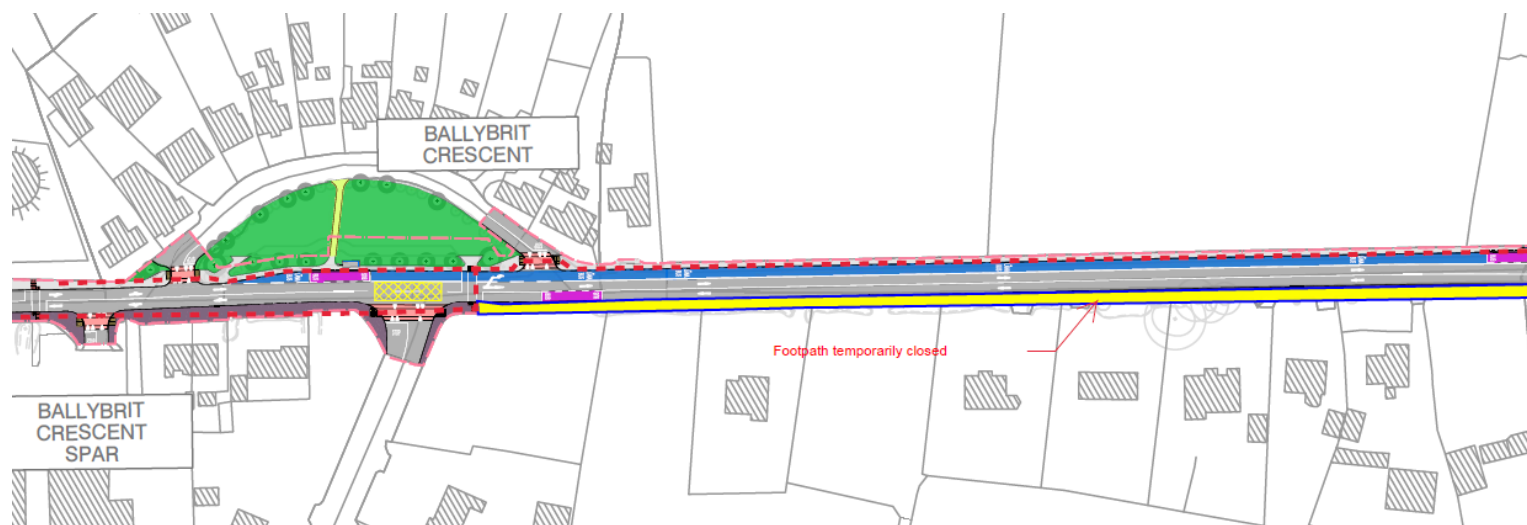
- Night shift works will be ongoing in Stage Areas 1 to 6 from June 17 to July 19.
- Night shift works will run from 6:30pm in the evening to approximately 6.00am the following morning.
- Night shift works will be focused mainly on footpath works, road resurfacing, line marking and new traffic signal installations.
- Temporary traffic management measures, including some lane closures, will be required from the Briarhill Junction to Parkmore Road to facilitate the works.
- Temporary pedestrian and cycleway diversions will also be in place around the works areas as is necessary.

Revised Pedestrian Diversion Route for Stage 2,4 and 6 Works:

- To facilitate completion of footpath works in Stage 2, 4 and 6 areas, temporary pedestrian diversion routes will be in place as per the sketches below from Monday June 17 for a period of 4 weeks.
- Temporary pedestrian management signage will be in place advising of the new pedestrian routes and relocated bus stop locations.



Monivea Junction (Part 1)



Ballybrit Crescent (Part 2)

For further information: Contact us at Jons Civil Engineering 0860835461 or donalkelly@jonscivil.ie